



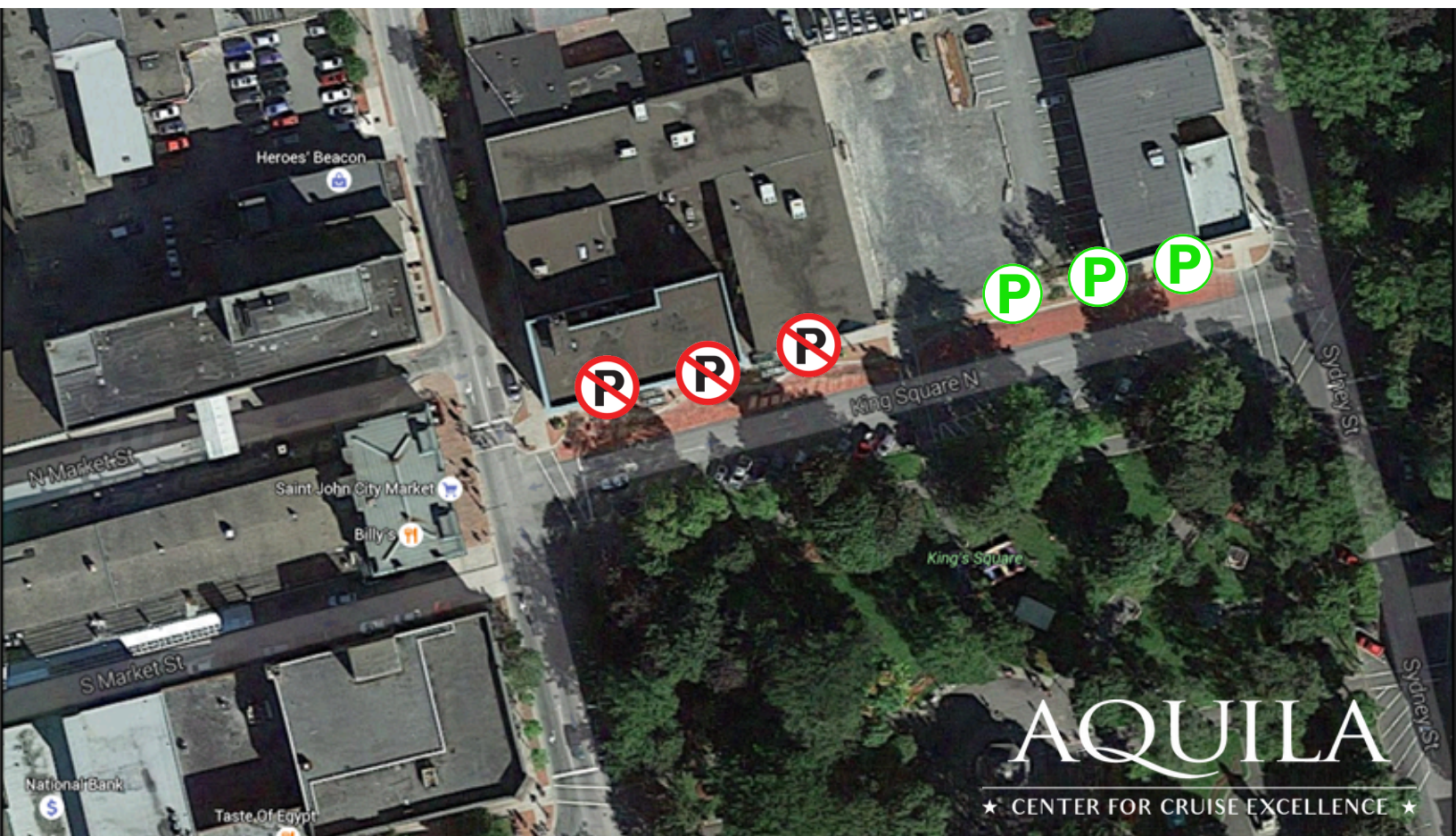
# Site Parking Guide for Tour Bus Drivers

AQUILA

★ CENTER FOR CRUISE EXCELLENCE ★

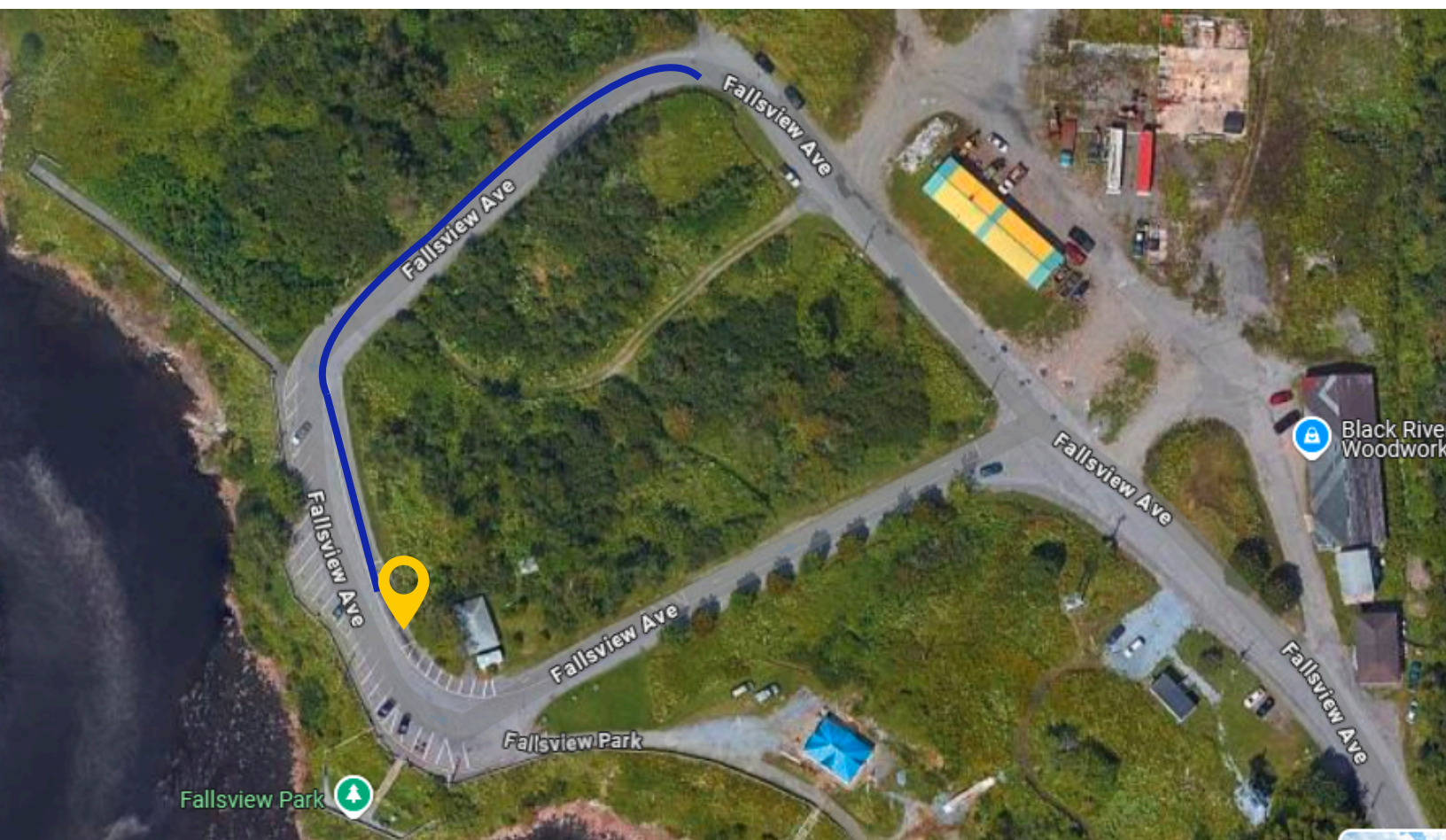
# Saint John City Market

- Please leave the first 3 spots of parking at the City Market for City Transit buses
- Trolleys and buses should please use the last 3 spots.
- Please do not park and wait here for guests to return.
- You may park at Lower Cove Loop and come back closer to the meeting time to pick up guests. .



# Fallsview Park

- When coming into Fallsview Park, please have your bus park near the washroom to drop guests off (yellow mark).
- As soon as guests are off the bus, the bus should move ahead to the end of the loop and park (white marks).
- The next bus should pull up behind the first bus, and so on.
- All buses should stay in the bus lane on the left.
- Drivers should stay with their buses and move ahead as buses leave.



# St. Martins Harbour

We kindly ask that you follow these rules to avoid any potential fines or penalties. The Village of Fundy-St. Martins has engaged the RCMP in this matter and they will work to address non-compliance.

- Only enter into the harbour lot using the entrance just before the bridge. Max 3 buses at a time. Be sure not to idle when dropping off guests. Instruct guests to always use the crosswalk when walking to the pick up location. Exit turning right onto Main St. to park at pick up location.
- Absolutely no stopping or parking on the road by the lighthouse. You cannot drop off or pick up guests here.



# St. Andrews

Commercial Bus Parking is no longer available in Downtown Saint Andrews. Please follow the instructions provided on where to park, drop off, and pick up patrons for your service. If Commercial Buses do not follow these instructions, By-Law Enforcement will require them to move. If they do not move, the Commercial Buses are subject to fines under By-Law 25-01, and potential towing. We encourage you to please inform your drivers of this change of parking as we are trying to maximize the enjoyment of the community by all.

## Commercial Bus Parking in Saint Andrews

Legend	Location of Bus Parking
Areas Highlighted in RED	Upon entry to Saint Andrews off of Mowat Drive and Bayview Drive, there is Commercial Bus Parking across from the Algonquin Golf Course at 160 Reed Avenue. Buses can also park at and along Indian Point and Indian Point Park.
Yellow Star	1. Drop off bus patrons on Water Street at the corner of Water Street and King Street. Buses must proceed to one of the designated parking locations identified on the map.
Blue X	2. Picking up bus patrons at the corner of King Street and Queen Street.



# Place Fort La Tour

- Pull straight into Long Wharf directly into the parking area (not onto the pier where we would welcome guests)
- Proceed directly to the end of the parking area to space indicated on the map below.
- There is enough room for 3 buses to park and remain for guests to return.
- If by chance a 4<sup>th</sup> bus arrives, 1<sup>st</sup> bus can turn and park along fence on the opposite side of the lot (yellow mark) against the fence and remaining buses can pull forward.



# O'Leary's

- Drop off guests on Canterbury Street. Do not idle. You cannot stay parked here.
- You may park at Lower Cove Loop while waiting and return back at pick up time.

